

## Program Application Form for EWB-USA Projects

This form is for NGO's, Communities, and chapters to submit new & existing projects to EWB-USA for review.

### New & Existing Projects:

*For an NGO or Community (with no chapter) Complete: All sections except section 6*

*For an EWB-USA chapter Complete: All Sections*

**Note: EWB-USA does not provide cash donations or grants to communities.**

### Project Process:

- 1) Applications are reviewed by the Technical Advisory Committee (TAC). The TAC is a group of professional engineers who volunteer to review projects for technical content and the mission statement.
- 2) The TAC will decide whether to make the proposed project an official EWB-USA project. This process will take from 4-8 weeks.
- 3) If the project does not already have a chapter, the project will be placed on the EWB-USA website for adoption by a chapter. Note: This process can take several months, and occasionally, some projects are not adopted by chapters.
- 4) Once a chapter has a project, they will contact the community to begin the exchange of technical and cultural information and plan an assessment trip.
- 5) The chapter will travel to the community for an assessment trip. (Prior to travel, the assessment plan (#806) must be approved by the TAC at least 4 weeks in advance of departure)
- 6) The chapter then designs the project and includes the community in the final design process and choice.
- 7) The chapter may return to the community for a second assessment trip to discuss design alternatives with the community. (Prior to travel, the assessment plan (#806) must be approved by the TAC)
- 8) The chapter will travel to the community to implement the design. (Prior to travel, the design must be approved by the TAC (#807))

### What we are looking for in projects:

- 1) The project scope agrees with EWB-USA's mission
- 2) Project will benefit the community and won't discriminate against members of the community
- 3) There is community involvement and participation (helping with the installation, materials, food etc)
- 4) Well defined scope of work (example: This project is to increase the community's water supply.)
- 5) The project cost is reasonable for volunteers to fundraise.
- 6) Safety concerns:
  - a. EWB-USA will not approve projects from countries that have a state department warning and one or all of the following:
    - i. US Peace Corps has pulled out of the country
    - ii. UN Peace Keepers are in the country and there is any violence in the country
  - b. Currently, EWB-USA will not approve projects in the following countries: Afghanistan, Algeria, Bosnia, Burundi, Burma (Myanmar), Central African Republic, Columbia, Cuba, Haiti, Iraq, Iran, Isreal, Gabon, Lebanon, Liberia, Libya, Nepal, Nigeria, North Korea, Pakistan, Somalia, Sri Lanka, Sudan, Syria, Uzbekistan, Zimbabwe and any other country that fits the above safety concerns.

### Submission Information:

Check the EWB-USA website for submission deadlines

**The Preferred method of submission is to email this form (must be less than 1MB) to: [projects@ewb-usa.org](mailto:projects@ewb-usa.org)**

Forms may also be mailed to:

EWB-USA Project Manager  
1880 Industrial Circle, Suite B-3  
Longmont, CO, 80501 USA

## SECTION 1: Program Information

Today's Date: 3/17/08

1) Please check one of the following boxes:

- New Program Submitted by NGO or community (no chapter has adopted the project yet)  
 New Program Submitted by a chapter of EWB (chapter has adopted the project)

2) Country: Belize

3) Region/State (Encompasses neighboring villages): Orange Walk District

4) Location in Country (e.g. South West Kenya, 30 miles from Tanzania) Northwest Belize, near borders with Mexico and Guatemala; ~16 miles southwest of Orange Walk Town on Yo Creek Road

5) Community: August Pine Ridge

6) Project Title: Community Improvement Program

7) Has a chapter of EWB-USA agreed to accept this project?    Yes    **No TBD**

If Yes:

Name of Chapter(s): \_\_\_\_\_

Contact person: \_\_\_\_\_

E-mail or Phone: \_\_\_\_\_

***Note: If a chapter has already agreed to accept this project, please CC the chapter's /faculty advisor via e-mail when submitting this application or submit a letter of approval from the advisor***

8 Program Summary: provide a ***short*** overview summary of the scope of work of the proposed program.

- One paragraph. Approximately: 75 words

The August Pine Ridge Village Council is committed to work on a program to improve the quality of life of their community members. The initial needs identified include: automatic pumping for the community well, testing and improvement of quality of community water supply, hurricane shelter and multi-purpose community center; solid waste disposal dumpsite, bridge replacement, school security fence and lighting, and road speed bumps. Solar water heating also was identified. The needs and priorities will be better defined through community assessment and input from the community.

9) **Detailed Project Description:** Provide a more detailed description of your project. What is the goal of the project? Why is this project necessary? Are there any proposed solutions for the project? What alternative designs or solutions have been considered? Why were they rejected? See sample questions below:

- One-Three paragraphs: Approximately 500 words
  - *For Water Supply:*
    - *What are the possible sources of water? (e.g. type, location, distance from community); What is the elevation change?; How clean is the water?; Are there water rights issues that need to be considered?*
  - *Water Purification*
    - *What are the water quality associated diseases have been found in the community?; What quantitative and qualitative community health assessments have been done?; Has there been any testing of the water? What were the results?*
  - *Energy project*
    - *What will the electricity power?; How much power is required?; What possible methods are available? (E.g. wind, solar, biomass surveys, etc).*
  - *Construction:*
    - *What materials are available locally?; What are the typical local construction methods used in the area?*

- The initial program includes: Automate pumping from well to distant (~0.8 mi) elevated tank which gravity feeds water (~1.1 mi) to the village. Now a person travels ~1.9 miles from the village to the well two times per day to manually pump water to the tank. They pump about 8 hours per day, the electricity bills run \$500-600BZ per month. With manual pumping, they run out of water for the village or overflow the tank, wasting water and electricity. The elevated tank is 10-15,000 gal capacity (check this).
- Test and improve the quality of community water supply. It is very hard, with high concentrations of chloride, salts from calcareous sediments, large concentrations of hardness and sulphate. Treatment could make it more useful. Currently, people don't like to drink it or cook with it. People purchase bottled water, use rainwater from roof collection, or from shallow wells in the village for these household uses.
- Increase hurricane shelter space in a multi-purpose community center. There's not enough reinforced building capacity to accommodate all the people in the village in the event of a hurricane. They currently use the school and clinic as well as some private buildings. A multi-purpose community center could also house other community functions such as a computer/internet lab, conference and meeting space, training center, and market space.
- Engineer a dumpsite. Solid waste is a real problem. People dump trash haphazardly, creating potential health and groundwater pollution problems.
- Replace bridge for vehicle and pedestrian traffic. A number of students and families have to travel a substantial distance without the bridge.
- Fence and light school yard. Security is needed to eliminate animal feces contamination, vandalism, and equipment being stolen.
- Solar water heating and speed bumps are other identified needs.

10) How many people will be affected by this project in a certain geographic region?

- a) Directly Affected: >3000
- b) Indirectly Affected: \_\_\_\_\_
- c) Geographic Area (5km radius, town, region etc): Village of August Pine Ridge

11) **Background:** What is the cause and history of the problem? If any efforts were made, please describe the outcome. *(This is to be posted on the EWB-USA website)*

- One to Three Paragraphs: Approximately 200 Words

The current village council chairman, Julio Magana, and other council members are committed to improve the quality of life of their community members. Mr. Magana indicated that they have a number of needs throughout the community but lack technical and financial resources to address them, so they have to see what kind of help is available.

While details are not known for August Pine Ridge, the CIA fact book indicates Belize’s Gross Domestic Product was US\$2.336 billion (2007 est.), or US\$ \$7,800 (2007 est.) per capita. Belize has a labor force of around 113,000, with a shortage of skilled labor and all types of technical personnel (2006 est.). The official unemployment rate is 9.4% (2006), but in many rural areas of Belize it is much higher.

The community water supply was implemented through the Government of Belize Social Investment Fund, which has brought rudimentary potable water systems to community households throughout Belize.

12) Check the specific services or needs addressed for this project. Check all that apply.

- |   |   |
|---|---|
| <input checked="" type="checkbox"/> Water Supply      | <input type="checkbox"/> Agriculture              |
| <input checked="" type="checkbox"/> Water Treatment   | <input type="checkbox"/> Alternative Fuels        |
| <input checked="" type="checkbox"/> Sanitation        | <input type="checkbox"/> Information Systems      |
| <input checked="" type="checkbox"/> Energy            | <input type="checkbox"/> Socio-Cultural           |
| <input checked="" type="checkbox"/> Construction      | <input checked="" type="checkbox"/> Environmental |
| <input type="checkbox"/> Micro-Enterprise             | <input type="checkbox"/> Ecosystem                |
| <input checked="" type="checkbox"/> Health and Safety | <input checked="" type="checkbox"/> Education     |

Other: Describe: \_\_\_\_\_

## SECTION 2: Project Impacts

1) What potential impacts, both negative and positive, are anticipated or could possibly occur as a consequence of this project? Please consider health, economic, environmental, social, cultural, and ecosystem impacts. For any possible negative aspects, how can these negative impacts be diminished? Could any segment of society be marginalized, excluded or lose their current societal function because of this project? Please explain

### POSITIVE:

- One-Two paragraphs: Approximately 100 words

The program will provide health, safety, environmental, and economic benefits to the community through water supply improvements, hurricane shelter and community center; solid waste dumpsite, bridge replacement, school security, road speed bumps and solar water heating. No segments of the community would be marginalized.

### NEGATIVE:

- One-Two paragraphs: Approximately 100 words

There is a potential negative impact to vendors of bottled water from outside the community. It is also possible that treatment options for the water supply may be too costly or present maintenance issues that are not sustainable for the community. Increased water palatability and use could also put additional load on the sanitary waste system, which is based on latrines and septic systems.

2) In what ways do you envision EWB's involvement in this project? What specific skills can EWB-USA offer that are not available locally? How will this project lead to the long term sustainability of the community?

- One-Two paragraphs: Approximately 100 words

EWB can assist the village by partnering with them for comprehensive needs assessment, prioritization, project scoping, engineering, construction management, and monitoring of benefits. The village is interested in fundraising help, but they need technical assistance from EWB.

3) Who is expected to own this proposed project? Will a committee need to be established? Who will manage and maintain the project? Who will cover the cost of maintenance?

- One paragraph: Approximately 150 words

The community will own this program and the resulting projects. There is an existing water board and other boards would be established in the event the village council determined they were needed for specific projects. The community will cover the cost of the maintenance. An exception might be individually owned household solar water heaters.

4) What education will be needed for this project to be successful? Who will educate and who will need to be educated? Will verbal or written translation be needed for this education? Who will do the translating?

- One-Two paragraphs: Approximately 75 words

Each of the program elements would have an educational component to explain the need, the priority the community places on it, the solution, and to provide training to ensure maintenance and operation and ongoing sustainability. Translation will not likely be needed since English is the official language. However, Spanish is used extensively in northern Belize and could be provided by the community if needed

5) Will the proposed project be freely accessible to all persons in the local area, or will it be restricted for use by certain groups? Will a fee structure be involved? Who will decide on the amount of the fees and who will collect the fees?

- One-Two paragraphs: Approximately 100 words

All program elements will be accessible to everyone in the community. There are already fees associated with the water supply. These would need to be increased to cover the additional cost of water treatment, and maintenance and operation of the upgraded system. Other fees may be identified as appropriate for other program elements, e.g., use of conference room or internet access.

### SECTION 3: Beneficiary Group(s) Information

1) Name of the Beneficiary Group: The community of August Pine Ridge

2) Describe the beneficiary group(s) in terms of ethnicity, tribal and religious affiliations, spatial organization, primary occupations and current income of all the sub-groups (if more than one). Are social relationships harmonious in the area where the beneficiary groups reside?

- One paragraphs: Approximately 75 words

The beneficiary group is August Pine Ridge, the second largest village in the Orange Walk District, located about 16 miles from Orange Walk Town by an all-weather road, with robust bus transportation. The people are primarily of Mayan/Spanish speaking background and the community is harmonious.

3) How are decisions made within the beneficiary group(s) – i.e., village elders, tribal councils, democratically-elected village representatives, etc? How do women participate in decision-making?

- One-Two paragraphs: Approximately 75 words

The village council is democratically elected. This board makes all of the decisions for the community by soliciting opinions from the residents. Women often serve on these committees.

4) Describe the relationship between the local project facilitator/Non-Governmental Organization (NGO) and the beneficiary group(s).

- One- Two paragraphs: Approximately 50 words

Belize Open Source, a non-profit NGO with a partnering arrangement with EWB-USA, is developing a 40 acre land based learning center and working farm near August Pine Ridge and is committed to partnering with the community to identify needs and seek solutions. The village council chairman, Julio Magana, and other council members are committed to improve the quality of life of their community members. Natalio Soliz is an adviser to Belize Open Source, a retired educator, an August Pine Ridge businessman, and liaison to the community for this proposal.

5) Are people from the USA and aid from the USA welcome in the proposed project area? X Yes \_ No

6) Have people from the USA worked in the area before? If so who and in what capacity?

The Peace Corps and NGOs have had people working throughout Belize for many years. Mary Ann Studer, from Defiance College, Ohio, USA, has worked nearby, with teams of students, for three years on community based development projects. She has incorporated assessment of the August Pine Ridge community and the Belize Open Source property in her near-term work plans.

- One- Two paragraphs: Approximately 50 words

## Section 4: Roles of Partners & Funding

*EWB-USA's goal is to **partner** with developing communities to improve their quality of life by providing technical assistance for the design and development of projects. We expect community contribution to EWB-USA projects because it has been found that this leads to greater project success. EWB-USA is **not** a funding agency.*

1) What support both financial and/or non-monetary will be offered by the local community (housing, materials, continued education, etc...)? Will local labor and workmanship be offered free as part of the contribution from the beneficiary group(s)? Has a specific agreement been reached as to what EWB-USA and the community will each provide?

- One-Two paragraphs: Approximately 100 words

Volunteers can stay with families in the village and eat meals with the families. In addition, the community can donate some construction labor. However, generally it will be manual rather than skilled labor. Some building materials can be provided such as sand for concrete. The EWB team will be coordinating with the village, local universities, and potentially Government Ministry engineers, in developing priorities, design options, and cost estimates.

2) What support and funding will be offered by other local agencies and organizations, including governmental and non-governmental organization (NGO) (if any) facilitating the project? (*Note: In some cases, EWB-USA can only provide limited financial assistance for project construction*)

- One-Two paragraphs: Approximately 75 words

At this time funding partners are being considered but have not yet been committed. The village council chairman, Julio Magana, and other council members are seeking funding. Belize Open Source is willing to raise funds for the program. There is a possibility that the Rotary Club in Orange Walk Town may be interested in partnering with a USA Rotary club to support this program. The community will also explore support from other local businesses for help with equipment, experienced labor, and funding when more information on project priorities and budgets is available.

3) Part of EWB-USA's mission is to provide, if possible, opportunities for students to interact with local University students. Are any local universities interested in collaborating in this project?

- One paragraph: Approximately 50 words

There is an opportunity for collaboration with Muffles Junior College in Orange Walk and Galen University in San Ignatio, as well as Defiance College, Ohio, USA.

4) Project Budget: If an estimated project budget has been developed, please include the figures below  
(Note: Costs may be listed in greater detail if desired)

Estimated Labor Costs: \$ TBD  
Estimated Materials Cost: \$ TBD  
Estimated Equipment Cost: \$ TBD  
Estimated Total Project Cost: \$ TBD

NOTE: Estimate have not yet been developed.

## Section 5: Travel Logistics

1) When is the best time for a visit to the area considering weather, transportation access, holidays, as well as availability of the beneficiary group(s) and NGOs facilitating this project?

- One paragraph: Approximately 50 words

The rainy season is usually from May through November; however it is not a major constraint to travel. The dry season is usually February to May.

2) What local accommodations are available for the EWB-USA team? What are estimated per day living costs for the visiting team? Will the team stay with the local community members?

- One paragraph: Approximately 50 words

The volunteers can stay with families in the village and eat meals with them. The volunteers should expect to pay the families about \$12.50US per day for lodging and food. Alternatively, lodging is available in nearby Blue Creek or in Orange Walk Town.

3) What hazards may exist to persons from EWB-USA traveling to this project location (health issues, transportation difficulties, weather, insects, diseases, snakes, etc.)

- One-Two paragraphs: Approximately 100 words

There are natural hazards in the area with seasonal potential for hurricanes and floods. Road conditions can vary due to the weather. Bottled water may be advised. Mosquito born illnesses are a known problem and advisories are noted for Malaria and Dengue fever. Check for vaccinations needed. Cipro or another antibiotic may be advisable for digestion problems. Crime can be a serious problem, particularly in Belize City and some remote areas. Road accidents are common. Public buses and taxis are frequently in poor condition and lack safety equipment. Medical care is limited.

4) Where is the nearest hospital or clinic approved by the **US State Department or Peace Corps**? What kind of health care providers regularly staff this facility? How far from the project site? Provide an address and phone number(s).

- One-Two paragraphs: Approximately 100 words

The US State Department web site notes medical care for minor conditions is generally available in urban areas. Trauma or advanced medical care is limited even in Belize City; it is extremely limited or unavailable in rural areas. Serious injuries or illnesses often necessitate evacuation to another country. The US Consular Office indicates the approved facilities are in Belize City ~65 miles away and include: Karl Heusner Memorial Hospital in Belize City (Princess Margaret Dr., tel. 501-223-1548), a modern public hospital and Belize Medical Associates 5791 St. Thomas St., Kings Park; tel. 501-223-0302, a private hospital. However, there are other facilities with less capability nearby: ~10 miles away, Blue Creek Medical Center is staffed by a nurse, 501-323-0301; ~16 miles away, Northern Regional Hospital, Orange Walk is staffed by nurses and doctors, 501-322-2072

## Section 6: Chapter Application

*If this application is being submitted by a chapter, then please fill out this section (i.e. a chapter has contacted and wants to participate in this project):*

**Chapter Name:** \_\_\_\_\_

**Chapter President:** \_\_\_\_\_

Name	E-mail address	Phone
------	----------------	-------

**Eligibility Criteria:** *(Note: We will not assign projects to chapters without a current chapter agreement)*

- 1) Is your EWB-USA chapter agreement current (circle)?    \_\_\_Yes    \_\_\_No
- 2) What is the date of submission of your Chapter Agreement? \_\_\_\_\_
- 3) Does your chapter currently have a project (circle)?    \_\_\_Yes    \_\_\_No
  - If Yes, which projects (Country, region, type)?

*(Note: In general, EWB-USA asks that chapters limit their number of projects to three for quality and funding reasons. Please contact the project managers with questions)*

- 4) How many people will be working on this project?
  - Number of Students: \_\_\_\_\_
  - Number of Professionals: \_\_\_\_\_
  - Are all project participants members of EWB?    \_\_\_Yes    \_\_\_No



8) How prepared is your chapter and your chapter members to implement this project? (i.e. training, future plans, teams, roles, learning needs, fundraising, etc)

- One-Two paragraphs: Approximately 100words

9) How prepared is your chapter for the cultural differences between the USA and this culture? What is the local language, and does anyone on your team know the local language? Are there sufficient translators available to meet the varied needs of all aspects of the project? Are you familiar with the culture and customs? What are you doing to familiarize yourselves with the culture and customs?

- One-Two paragraphs: Approximately 100words

10) Who will be your health point person (see document #406)? How do you plan to conduct your community health assessment on your assessment trip and on later trips? Do you have health professionals or students in the health professions (public health, nursing, medicine) on your travel team?

- One-Two paragraphs: Approximately 100words

**SECTION 7: Contact Information**

*You and your colleagues need to be the requesting organization*  
**Requesting Organization, Contact Information & Mission**

Name of Requesting Organization: \_\_\_\_ (maybe this should be the Village Council instead) Belize  
Open Source – Sustainable Development

Mission of the Requesting Organization: Promote environmentally and socially sustainable development, including a land-based learning center and working farm on 40 acre property near the village of August Pine Ridge.

Goal of the Requesting Organization: Partner with the people of August Pine Ridge community members in their effort to improve their quality of life.

\_\_\_\_\_  
Website of Organization (If applicable): \_\_\_\_\_ <http://belizeopensource.org/>

Name of Individual Requesting Assistance: Pat Coyle \_\_\_\_\_

Contact Email: \_\_\_\_\_ [pat@coyles.com](mailto:pat@coyles.com) \_\_\_\_\_

Contact Phone: 925 606-9646 \_\_\_\_\_

Contact Address: \_\_\_\_\_

Name of EWB-USA Chapter (if applicable): \_\_\_\_\_

Additional Contact Name (*in August Pine Ridge*): Natalio Soliz \_\_\_\_\_

Contact Email: Natalio Soliz <natalio.soliz@yahoo.com>

Contact Phone: 011-501-323-3048, (cell) 011-501-660-9915 \_\_\_\_\_

Contact Address: Natalio Soliz, mile 15.6 Yo Creek Road, August Pine Ridge, Orange Walk District, Belize, Central America

Name of on-site primary project facilitator: \_\_\_\_\_

Contact Email: \_\_\_\_\_

Contact Phone: \_\_\_\_\_

Contact Address: \_\_\_\_\_

## Section 8: Signature & Pictures

1) Please add any other information you think is relevant to this project.

- One-Two paragraphs: Approximately 200words Maximum

(Note this section is longer than the guideline.)

There is a broader regional and community context in which this program proposal should be considered. I am including comments on the 2/28/08 Belize Open Source brainstorming session and earlier correspondence from Edilberto Romero, Executive Director for Programme for Belize, a Belizean non-profit organization that owns and manages the nearby Rio Bravo Conservation and Management Area (RBCMA or Rio Bravo), Belize's largest private reserve and second largest single protected area. Eddie grew up in August Pine Ridge.

On Mon, Mar 17, 2008, Edilberto Romero wrote: ... I think there may be activities that could be of mutual benefit if it is planned and executed properly. One thing that Programme for Belize (PFB) has been interested in is to promote sustainable development in its neighboring communities (Coyle noted: he is referring specifically to August Pine Ridge). From that perspective, our sustainable timber harvesting program can lend itself to it. The idea is that we provide a certain volume of certified timber to a community group under consignment and they can turn it into value-added products (small furnishings, doors, etc.). Once they sell these products, they can pay for the timber and stay with the profits. It is like PFB giving them a zero interest loan. The needs for this to materialize are the following: 1.) The community group has to be organized with an acceptable and transparent accounting system; 2.) They will need equipment (could be housed at the "Station" or "Outreach Center"); 3.) They will need the training and technical assistance; 4.) They will need assistance with the marketing and landing/signing a few sale/purchase agreement; 5.) They will need to manage the activity as a business. PFB can provide the lumber, but the rest need to be provided by others, unless there is funding for PFB to do this...

The issue of soil fertility is an interesting one. I suggest you invite Marcos Osorio (who is with the Sugar Control Board, I believe) who has training in sustainable agriculture, and who has worked with a women's group on growing a few grain crops in August Pine Ridge. ... Marcos also has experience with integrated pest management as can be witnessed with the innovative control of frog hoppers on sugarcane, which has led to a reduction in pesticide use and crop loss. Who knows, he can also be a part-time instructor for some activities. The idea is to develop organic crop production that could tap into the niche "hotel market" and can be certified by Rainforest Alliance, a New York NGO with regional office in Costa Rica.

... The words of Soliz kept resonating in regards to the needs of women and the Pat's insistence of community benefit. For that reason, a community assessment is important. Soliz's paper/research/notes, although I was not there to hear, seems very important. While it is important to target tertiary educational needs, it is important that the community needs are looked at, especially at the level of those that only reach grade eight, who are the ones that will end up directly impacting the natural resources. Training and projects targeted to that level are very important. The Timber/Furniture activity where PFB can help is one such example targeting directly that community need. Another issue of importance is teenage pregnancy and large families without family planning. Joining with the Belize Family Life Association (BFLA), there is an office in Orange Walk. This should not only look at family planning but also at health issue especially related to women but should address family planning for the women, men and especially for youths. This training activity will not be a profitable venture but will definitely have a major impact on curbing poverty and improving the quality of life for the people in the communities.

On 11/29/2005 Edilberto Romero, Executive Director, Programme for Belize wrote, regarding an early Belize Open Source proposal: ... The huge issue at August Pine Ridge is the lack of opportunity for work

and viable businesses and industries. The low level of education limits the people at the chances of getting skilled jobs and entrepreneurial initiatives. ... in the area of August Pine Ridge. There is practically no NGO activity addressing the needs of the area.

Programme for Belize has August Pine Ridge as a stakeholder due to its relation to Rio Bravo and the need to keep them friendly and supportive of Rio Bravo as a protected area.

In general, there are a lot of things that can be produced in the August Pine Ridge area and indeed has been done in the past. When it comes to agriculture the people from the area are the best. Besides, finance, I think the largest limiting factor has been marketing. That is one of the main reason why people are still growing sugarcane even though its feasibility is very low and prices are going lower (expected to decrease by 17% in 2006 and 2007). However, it provides a certain level of autoemployment. The people from the area have successfully produced peanuts, rice, beans, corn, various vegetables, but it has not been successful business-wise mostly because of the lack of market availability. Their most recent loss has been in soybean production. My point here is that the feasibility study is required for every aspect of the project since the production is possible.

Sheep and goat have been raised by some people of August Pine Ridge successfully in terms of production. However, I think it has not picked up because of the limited market availability. A market study on this would be worthwhile if you are serious about getting into sheep and goat as a sustainable business operation. I think that is the first thing that has to be looked on and a feasibility analysis of the operation.

The aquaculture is a good one although I must mention that Programme for Belize does not support Tilapia farming since it is an exotic invasive species and we do not know yet the extent of its impact (if any) on the fresh waters and native species of Belize. We would prefer to see aquaculture of native species (which has been overfished in the local waters) and for which there is a market.

... Another activity that I have mentioned to some of the area representatives is furniture or value-added timber products (see above).

We have two field stations. La Milpa Field Station is used for ecotourism, education, non-extractive research and archaeological research and is a successful project. The Hill Bank Field Station is the base for forestry research, protection activities and education. The Hill Bank ecotourism facilities are underutilized and it is not generating excess revenues but providing essential services for the protection and management of Rio Bravo. It is expensive to run a field station. Therefore it is important to carry a feasibility study or alternatively to invest in an already existing field stations, like ours, for training.

Electricity and fuel is very expensive here in Belize. It would be wise to consider the use of a solar system or a dual system when the area gets too cloudy.

In closing, I would like to say that while we think the concept is good in principle, it needs a lot more work in terms of assessing market and the feasibility of the project if what you are thinking is to have a sustainable running operation. ... I also believe it is no use in training people in an operation of which they will not make money to get out of poverty when they go on their own to implement the skills they have learned.

On our part, Programme for Belize, while it supports the project in principle, can only get involved if its cost of participation is covered. Unfortunately, we do not have surplus funds to get involved in additional activities at the moment although we have expertise and valuable experience that can be useful to your project.

2) Please add pictures that may be helpful to understand the project.



- **Please add pictures as JPEG files**
- WE WILL NOT ACCEPT PROJECT APPLICATIONS FILES THAT ARE OVER **2MB**.
  - (To add a picture as a jpeg, go to Edit → Paste Special, and choose “Picture (jpeg)”).

3) Please Sign and date this form:

<u>P. D. Coyle</u>	<u>3/18/08</u>
Signature	Date

<u>Patrick Coyle</u>	<u><a href="mailto:pat@coyles.com">pat@coyles.com</a></u>
Printed Name	E-mail Address

4) Please submit this form electronically to the project manager at [projects@ewb-usa.org](mailto:projects@ewb-usa.org):  
*Note: Applications are only reviewed at specified times of the year. Please see the EWB-USA website for submission deadlines.*

	
August Pine Ridge Village Council members: Chairman, Julio Magana, Hugo Romero, Arcadio Torres, Javier Soliz, Faustino Tuz	August Pine Ridge town center; water tower and well are down the road to the left



Roberto Coye, Water Board, checking water level in tank



August Pine Ridge water tower, looking down road toward well



Roberto Coye, Water Board, at the pump house fenced yard



Roberto Coye, Water Board, at the well



Well and line to water tank



Electrical panel and pump control



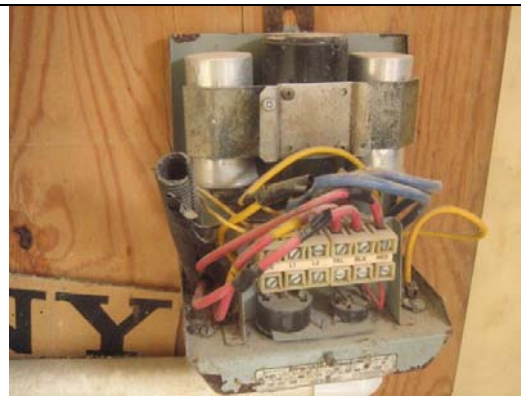
Concrete base in pump house, electrical gear on wall



Chlorine injection pump (not currently used)



Breakers for pump and lights



Pump controls



Transformer on power pole



Service entry at pump house